

# MYSTIC MOMENTS

## Certificate of Analysis

General Information	
Product Name	Patchouli Oil
Product Code	OEPATC
Batch Number	4494603
Manufacturing Date	January 2023
Best Before Date	January 2026
Country of Origin	Indonesia

Analytical Details		
	Specification	Results
Appearance	Mobile liquid	Conforms
Odour	Aromatic spicy, woody-balsamic odor	Conforms
Colour	Amber to brown	Conforms
Refractive Index @ 20°C	1.483 to 1.523	1.504
Specific Gravity @ 20°C	0.926 to 0.966	0.944

## ALLERGEN DECLARATION

We hereby confirm that the following item contains the components listed below. Stated are the total levels added plus levels from natural ingredients. The information is supplied to enable compliance with Cosmetic and Detergent regulations.

### CF0064 Patchouli Oil

Ingredient	CAS	EC	Concentration (%)
There are no allergens.			

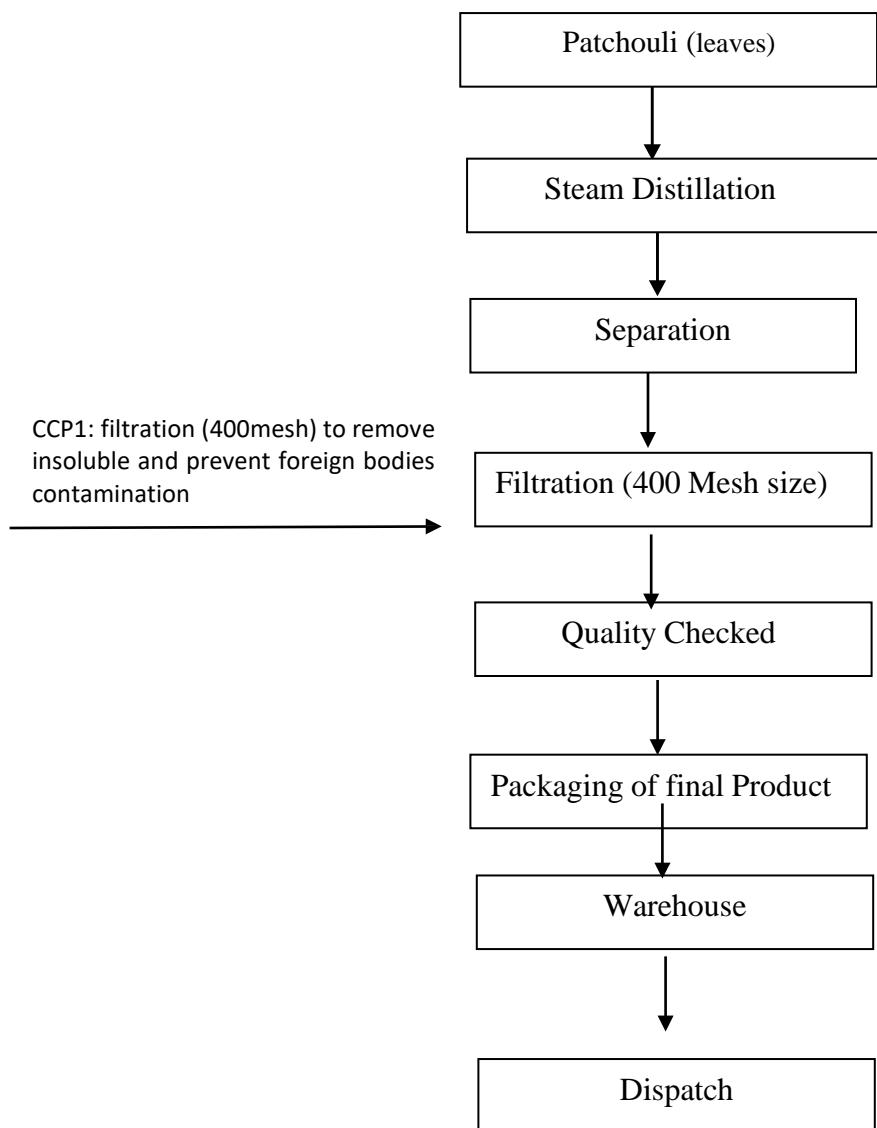
Regulatory Affairs Department

# MYSTIC MOMENTS

## HAZARD ANALYSIS CRITICAL CONTROL POINTS MANUFACTURING FLOW CHART

### PATCHOULI OIL

Patchouli Oil is obtained from Pogostemon cablin by the following steps:



# MYSTIC MOMENTS

## GMO/VEGAN Declaration

MATERIAL	Patchouli
----------	-----------

For the purpose of this statement 'genetically modified organism (GMO)' is defined in Directive 2001/18/EC as an organism in which the genetic material has been altered in a way that does not occur naturally by mating and/or natural recombination.

This is to certify that to the best of our knowledge and belief the product is not produced by gene modification or derived from genetically modified organisms or from the use of genetically modified organisms.

If this liquid is to be incorporated in any genetically modified food or animal feed then we certify that it complies with EC 1829/2003 and 1830/2003 regulations.

We, Madar Corporation Limited, from information received from our supplier, hereby declare that the material listed above is compliant with a vegan or vegetarian diet. It does not contain any animal ingredients or animal by products. No animal ingredients or by products are used in the manufacturing process.

19/10/2021

## CERTIFICATE OF CONFORMITY WITH IFRA STANDARDS

This Certificate assesses the conformity of the fragrance mixture with IFRA Standards and provides restrictions for use as necessary. It is based only on those materials subject to IFRA Standards for the toxicity endpoints described in each Standard.

This Certificate does therefore not replace a comprehensive safety assessment of the fragrance mixture.

### CERTIFYING PARTY:

Madar Corporation Limited  
19 - 20 Sandleheath Industrial Estate  
Fordingbridge  
SP6 1PA

### CERTIFICATE DELIVERED TO:

### SCOPE OF THE CERTIFICATE:

Patchouli Oil **COMPULSORY INFORMATION:**

We certify that the above mixture is in compliance with the Standards of the INTERNATIONAL FRAGRANCE ASSOCIATION (IFRA), up to and including the 50th Amendment to the IFRA Code of Practice (published June 2021), provided it is used in the following categories at a maximum concentration level of:

IFRA Categories [see Annex 1 below for details]	Maximum Level of use (%)
IFRA Category 1	Not approved
IFRA Category 2	Not limited
IFRA Category 3	Not limited
IFRA Category 4	Not limited
IFRA Category 5A	Not limited
IFRA Category 5B	Not limited
IFRA Category 5C	Not limited
IFRA Category 5D	Not limited
IFRA Category 6	Not approved
IFRA Category 7A	Not limited
IFRA Category 7B	Not limited
IFRA Category 8	Not limited
IFRA Category 9	Not limited
IFRA Category 10A	Not limited
IFRA Category 10B	Not limited
IFRA Category 11A	Not limited
IFRA Category 11B	Not limited
IFRA Category 12	Not limited

For other kinds of application or use at higher concentration levels, a new evaluation can be needed; please contact Ultra International UK Ltd

### ADDITIONAL INFORMATION ABOUT INGREDIENTS

Information about presence and concentration of fragrance ingredients subject to IFRA Limits in the fragrance mixture Patchouli Oil is as follows:

19-20 Sandleheath Industrial Estate, Fordingbridge, Hampshire, SP6 1PA, UK

Tel: 01425 655555 Email: technical@madarcorporation.co.uk

Does not contain any substances restricted by the current IFRA Standards.

Regulatory Affairs Department

## ANNEX 1

Below is an extract of information provided by IFRA in relation to types of application present in each IFRA Category. Additional information about IFRA Categories can be found in the Guidance to IFRA Standards, issued by IFRA.

IFRA Category	Product Type
IFRA Category 1	Products applied to the lips: Lip products e.g. lipstick, lip balm; Childrens toys
IFRA Category 2	Products applied to the axillae: Deodorant and antiperspirant products of all types; Body sprays/mists
IFRA Category 3	Products applied to the face/body using fingertips: Eye products e.g. eye make-up, eye moisturizer; Facial make-up; Make-up remover; Nose pore strips; Wipes for face, neck, hands, body; Facial masks; Body and face paint
IFRA Category 4	Products related to fine fragrance: Hydroalcoholic and non-hydroalcoholic fine fragrance of all types e.g. Eau de Toilette, Parfum, Cologne, solid perfume, fragrancing cream, aftershaves of all types; Ingredients of perfume and fragrance mixtures for cosmetic kits; Scent pads; Scent strips
IFRA Category 5A	Body lotion products applied to the body using the hands (palms), primarily leave on: Foot care products e.g. creams, powders; Insect repellent for application to the skin; All powders and talc (excluding baby powders and talc)
IFRA Category 5B	Face moisturizer products applied to the face using the hands (palms), primarily leave on: Facial toner; Facial moisturizers and creams
IFRA Category 5C	Hand cream products applied to the hands using the hands (palms), primarily leave on: Hand cream; Nail care products including cuticle creams; Hand sanitizers
IFRA Category 5D	Baby creams, baby oils and baby talc: Baby cream/lotion, baby oil, baby powders and talc
IFRA Category 6	Products with oral and lip exposure: Toothpaste; Mouthwash, including breath sprays; Toothpowder, strips, mouthwash tablets
IFRA Category 7A	Rinse-off products applied to the hair with some hand contact: Hair permanent or other hair chemical treatments (rinse-off) e.g. relaxers, including rinse-off hair dyes
IFRA Category 7B	Leave-on products applied to the hair with some hand contact: Hair sprays of all types e.g. pumps, aerosol sprays; Hair styling aids non sprays e.g. mousse, leave-on conditioners; Hair permanent or other hair chemical treatments (leave-on) e.g. relaxers, including leave-on hair dyes; Shampoo - Dry (waterless shampoo); Hair deodorizer
IFRA Category 8	Products with significant anogenital exposure: Intimate wipes; Tampons; Baby wipes; Toilet paper (wet)
IFRA Category 9	Products with body and hand exposure, primarily rinse off: Bar soap; Liquid soap; Shampoo of all type; Conditioner (rinse-off); Body washes and shower gels of all types; Baby wash, bath, shampoo; Bath gels, foams, mousses, salts, oils and other products added to bathwater; Cleanser for face (rinse-off); Shaving creams of all types e.g. stick, gels, foams; All depilatories (including facial) and waxes for mechanical hair removal; Foot care products (feet are placed in a bath for soaking); Shampoos for pets
IFRA Category 10A	Household care excluding aerosol / spray products: Hand wash laundry detergent; Laundry pre-treatment of all types e.g. paste, sprays, sticks; Machine laundry detergents with skin contact e.g. liquids, powders; Fabric softeners of all types including fabric softener sheets; Ironing water; Hand dishwashing detergent; Hard surface cleaners of all types e.g. bathroom, kitchen cleansers, furniture polish; Toilet seat wipes; Household cleaning products, other types including fabric cleaners, carpet cleaners, furniture polishes sprays and wipes, stain removers, treatment products for textiles e.g. starch sprays; Floor wax; Dry cleaning kits; Fragranced oil for lamp ring, reed diffusers, pot-pourri, liquid refills for air fresheners (non-cartridge systems), etc.
IFRA Category 10B	Household aerosol/spray products: Animal sprays applied to animals; Air freshener sprays, manual, including aerosol and pump; Aerosol/spray insecticides
IFRA Category 11A	Products with intended skin contact but minimal transfer of fragrance to skin from inert substrate without UV exposure: Feminine hygiene conventional pads, liners, interlabial pads; Diapers (baby and adult); Adult incontinence pant, pad; Toilet paper (dry)
IFRA Category 11B	Products with intended skin contact but minimal transfer of fragrance to skin from inert substrate with potential UV exposure: Tights with moisturizers; Scented socks, gloves; Facial tissues (dry tissues); Napkins; Paper towels; Wheat bags; Facial masks (paper/protective) e.g. surgical masks not used as medical device; Fertilizers, solid (pellet or powder)
IFRA Category 12	Products not intended for direct skin contact, minimal or insignificant transfer to skin: Candles of all types ; Laundry detergents for machine wash with minimal skin contact (e.g. Liquid tabs, pods); Automated air fresheners and fragrancing of all types e.g. concentrated aerosol with metered doses, plug-ins, electrical, incense, liquid refills (cartridge); Air delivery systems; Cat litter; Cell phone cases; Deodorizers/maskers not intended for skin contact e.g. fabric drying machine deodorizers, carpet powders; Fuels; Insecticides e.g. mosquito coil, paper, electrical, for clothing, excluding aerosols/sprays; Joss sticks or incense sticks; Dishwash detergent and deodorizers - for machine wash; Olfactive board games; Paints; Plastic articles (excluding toys); Scratch and sniff; Scent pack; Scent delivery system (using dry air technology); Shoe polishes; Rim blocks (Toilet)

## SAFETY DATA SHEET

In accordance with REACH Regulation EC No.1907/2006!

**Product:** Patchouli Oil  
2

**Version:**

### Section 1. Identification of the substance or the mixture and of the supplier

#### 1.1 Product Identifier

**Product identifier:** Patchouli Oil CF0064(Contains:alpha-Guaiene, alpha-Pinene, beta-Caryophyllene, beta-Pinene)  
**Other identifiers:** Pogostemon cablin (8014-09-3)

#### 1.2 Relevant identified uses of the substance of mixture and uses advised against

**Product uses:** Fragrances

#### 1.3 Details of the supplier of the safety data sheet

**Company name:** Madar Corporation Limited  
**Company address:** 19 - 20 Sandleheath Industrial Estate  
Fordingbridge  
SP6 1PA

#### Contact:

**E-Mail address:** technical@madarcorporation.co.uk  
**Company phone:** +44 1425 655 555

#### 1.4 Emergency telephone number

**Emergency phone:** +44 1425 655 555

### Section 2. Hazards identification

#### 2.1 Classification of the substance or mixture

##### Classification under Regulation (EC) No 1272/2008

**Class and category of danger:** Skin Corrosion / Irritation Category 2  
Eye Damage / Irritation Category 2  
Sensitization - Skin Category 1  
Aspiration Hazard Category 1  
Hazardous to the Aquatic Environment - Long-term Hazard Category 2  
H304, May be fatal if swallowed and enters airways.  
H315, Causes skin irritation.  
H317, May cause an allergic skin reaction.  
H319, Causes serious eye irritation.  
H411, Toxic to aquatic life with long lasting effects.



## SAFETY DATA SHEET

In accordance with REACH Regulation EC No.1907/2006!

**Product:** Patchouli Oil

**Version:** 2

### 2.2 Label elements

#### Classification under Regulation (EC) No 1272/2008

**Signal word:** Danger

**Hazard statements:** H304, May be fatal if swallowed and enters airways.  
H315, Causes skin irritation.  
H317, May cause an allergic skin reaction.  
H319, Causes serious eye irritation.  
H411, Toxic to aquatic life with long lasting effects.

**Supplemental Information:** None

**Precautionary statements:** P261, Avoid breathing vapour or dust.  
P264, Wash hands and other contacted skin thoroughly after handling.  
P272, Contaminated work clothing should not be allowed out of the workplace.  
P273, Avoid release to the environment.  
P280, Wear protective gloves/eye protection/face protection.  
P301/310, IF SWALLOWED: Immediately call a POISON CENTER or doctor/physician.  
P302/352, IF ON SKIN: Wash with plenty of soap and water.  
P305/351/338, IF IN EYES: Rinse cautiously with water for several minutes. Remove contact lenses, if present and easy to do. Continue rinsing.  
P331, Do not induce vomiting.  
P333/313, If skin irritation or rash occurs: Get medical advice/attention.  
P337/313, If eye irritation persists: Get medical advice/attention.  
P362, Take off contaminated clothing and wash before reuse.  
P391, Collect spillage.  
P405, Store locked up.  
P501, Dispose of contents/container to approved disposal site, in accordance with local regulations.

**Pictograms:**



### 2.3 Other hazards

**Other hazards:** None

## SAFETY DATA SHEET

In accordance with REACH Regulation EC No.1907/2006!

**Product:** Patchouli Oil

**Version:** 2

### Section 3. Composition / information on ingredients

#### 3.2 Mixtures

**Contains:**

Name	CAS	EC	REACH Registration No.	%	Classification for (CLP) 1272/2008
Patchouli alcohol	5986-55-0	227-807-2		20-<50%	Aquatic Chronic 2; H411,-
alpha-Guaiene	3691-12-1			10-<20%	Skin Irrit. 2-Eye Irrit. 2-Asp. Tox 1;H304-H315-H319,-
beta-Caryophyllene	87-44-5	201-746-1		1-<5%	Skin Sens. 1B-Asp. Tox 1-Aquatic Chronic 4;H304-H317-H413,-

**Substances with Community workplace exposure limits:**

Not Applicable

**Substances that are persistent, bioaccumulative and toxic or very persistent and very bioaccumulative, greater than 0.1%:**

Not Applicable

### Section 4. First-aid measures

#### 4.1 Description of first aid measures

**Inhalation:** Remove from exposure site to fresh air, keep at rest, and obtain medical attention.

**Eye exposure:** IF IN EYES: Rinse cautiously with water for several minutes. Remove contact lenses, if present and easy to do. Continue rinsing.

**Skin exposure:** IF ON SKIN: Wash with plenty of soap and water.

**Ingestion:** IF SWALLOWED: Immediately call a POISON CENTER or doctor/physician.

#### 4.2 Most important symptoms and effects, both acute and delayed

May be fatal if swallowed and enters airways.

Causes skin irritation.

May cause an allergic skin reaction.

Causes serious eye irritation.

#### 4.3 Indication of any immediate medical attention and special treatment needed

None expected, see Section 4.1 for further information.

### SECTION 5: Firefighting measures

#### 5.1 Extinguishing media

Suitable media: Carbon dioxide, Dry chemical, Foam.

## SAFETY DATA SHEET

In accordance with REACH Regulation EC No.1907/2006!

**Product:** Patchouli Oil

**Version:** 2

### 5.2 Special hazards arising from the substance or mixture

In case of fire, may be liberated: Carbon monoxide, Unidentified organic compounds.

### 5.3 Advice for fire fighters:

In case of insufficient ventilation, wear suitable respiratory equipment.

## Section 6. Accidental release measures

### 6.1 Personal precautions, protective equipment and emergency procedures:

Avoid inhalation. Avoid contact with skin and eyes. See protective measures under Section 7 and 8.

### 6.2 Environmental precautions:

Keep away from drains, surface and ground water, and soil.

### 6.3 Methods and material for containment and cleaning up:

Remove ignition sources. Provide adequate ventilation. Avoid excessive inhalation of vapours. Contain spillage immediately by use of sand or inert powder. Dispose of according to local regulations.

### 6.4 Reference to other sections:

Also refer to sections 8 and 13.

## Section 7. Handling and storage

### 7.1 Precautions for safe handling:

Keep away from heat, sparks, open flames and hot surfaces. - No smoking. Use personal protective equipment as required. Use in accordance with good manufacturing and industrial hygiene practices. Use in areas with adequate ventilation. Do not eat, drink or smoke when using this product.

### 7.2 Conditions for safe storage, including any incompatibilities:

Store in a well-ventilated place. Keep container tightly closed. Keep cool. Ground/bond container and receiving equipment. Use explosion-proof electrical, ventilating and lighting equipment. Use only non-sparking tools. Take precautionary measures against static discharge.

### 7.3 Specific end use(s):

Fragrances: Use in accordance with good manufacturing and industrial hygiene practices.

## Section 8. Exposure controls/personal protection

### 8.1 Control parameters

Workplace exposure limits: Not Applicable

# MYSTIC MOMENTS

## SAFETY DATA SHEET

In accordance with REACH Regulation EC No.1907/2006!

**Product:** Patchouli Oil

**Version:** 2

### 8.2 Exposure Controls

#### Eye / Skin Protection

Wear protective gloves/eye protection/face protection

#### Respiratory Protection

Under normal conditions of use and where adequate ventilation is available to prevent build up of excessive vapour, this material should not require special engineering controls. However, in conditions of high or prolonged use, or high temperature or other conditions which increase exposure, the following engineering controls can be used to minimise exposure to personnel: a) Increase ventilation of the area with local exhaust ventilation. b) Personnel can use an approved, appropriately fitted respirator with organic vapour cartridge or canisters and particulate filters. c) Use closed systems for transferring and processing this material.

Also refer to Sections 2 and 7.

### Section 9. Physical and chemical properties

#### 9.1 Information on basic physical and chemical properties

<b>Appearance:</b>	Not determined
<b>Odour:</b>	Not determined
<b>Odour threshold:</b>	Not determined
<b>pH:</b>	Not determined
<b>Melting point / freezing point:</b>	Not determined
<b>Initial boiling point / range:</b>	Not determined
<b>Flash point:</b>	110 °C
<b>Evaporation rate:</b>	Not determined
<b>Flammability (solid, gas):</b>	Not determined
<b>Upper/lower flammability or explosive limits:</b>	Product does not present an explosion hazard
<b>Vapour pressure:</b>	Not determined
<b>Vapour density:</b>	Not determined
<b>Relative density:</b>	Not determined
<b>Solubility(ies):</b>	Not determined
<b>Partition coefficient: n-octanol/water:</b>	Not determined
<b>Auto-ignition temperature:</b>	Not determined
<b>Decomposition temperature:</b>	Not determined
<b>Viscosity:</b>	Not determined
<b>Explosive properties:</b>	Not expected
<b>Oxidising properties:</b>	Not expected

**9.2 Other information:** None available

# MYSTIC MOMENTS

## SAFETY DATA SHEET

In accordance with REACH Regulation EC No.1907/2006!

**Product:** Patchouli Oil

**Version:** 2

### Section 10. Stability and reactivity

#### **10.1 Reactivity:**

Presents no significant reactivity hazard, by itself or in contact with water.

#### **10.2 Chemical stability:**

Good stability under normal storage conditions.

#### **10.3 Possibility of hazardous reactions:**

Not expected under normal conditions of use.

#### **10.4 Conditions to avoid:**

Avoid extreme heat.

#### **10.5 Incompatible materials:**

Avoid contact with strong acids, alkalis or oxidising agents.

#### **10.6 Hazardous decomposition products:**

Not expected.

### Section 11. Toxicological information

#### **11.1 Information on toxicological effects**

This mixture has not been tested as a whole for health effects. The health effects have been calculated using the methods outlined in Regulation (EC) No 1272/2008 (CLP).

<b>Acute Toxicity:</b>	Based on available data the classification criteria are not met.
Acute Toxicity Oral	Not Applicable
Acute Toxicity Dermal	Not Applicable
Acute Toxicity Inhalation	Not Available
<b>Skin corrosion/irritation:</b>	Skin Corrosion / Irritation Category 2
<b>Serious eye damage/irritation:</b>	Eye Damage / Irritation Category 2
<b>Respiratory or skin sensitisation:</b>	Sensitization - Skin Category 1
<b>Germ cell mutagenicity:</b>	Based on available data the classification criteria are not met.
<b>Carcinogenicity:</b>	Based on available data the classification criteria are not met.
<b>Reproductive toxicity:</b>	Based on available data the classification criteria are not met.
<b>STOT-single exposure:</b>	Based on available data the classification criteria are not met.
<b>STOT-repeated exposure:</b>	Based on available data the classification criteria are not met.
<b>Aspiration hazard:</b>	Aspiration Hazard Category 1

#### **Information about hazardous ingredients in the mixture**

Not Applicable

Refer to Sections 2 and 3 for additional information.

# MYSTIC MOMENTS

## SAFETY DATA SHEET

In accordance with REACH Regulation EC No.1907/2006!

**Product:** Patchouli Oil

**Version:** 2

### Section 12. Ecological information

#### 12.1 Toxicity:

Toxic to aquatic life with long lasting effects.

**12.2 Persistence and degradability:** Not available

**12.3 Bioaccumulative potential:** Not available

**12.4 Mobility in soil:** Not available

#### 12.5 Results of PBT and vPvB assessment:

This substance does not meet the PBT/vPvB criteria of REACH, annex XIII.

**12.6 Other adverse effects:** Not available

### Section 13. Disposal considerations

#### 13.1 Waste treatment methods:

Dispose of in accordance with local regulations. Avoid disposing into drainage systems and into the environment. Empty containers should be taken to an approved waste handling site for recycling or disposal.

### Section 14. Transport information

**14.1 UN number:** UN3082

**14.2 UN Proper Shipping Name:** ENVIRONMENTALLY HAZARDOUS SUBSTANCE, LIQUID, N.O.S.  
(Patchouli alcohol)

**14.3 Transport hazard class(es):** 9

**Sub Risk:** -

**14.4. Packing Group:** III

**14.5 Environmental hazards:** This is an environmentally hazardous substance.

**14.6 Special precautions for user:** None additional

**14.7 Transport in bulk according to Annex II of MARPOL73/78 and the IBC Code:**

Not applicable

### Section 15. Regulatory information

#### 15.1 Safety, health and environmental regulations/legislation specific for the substance or mixture

None additional

#### 15.2 Chemical Safety Assessment

A Chemical Safety Assessment has not been carried out for this product.

### Section 16. Other information

**Concentration % Limits:** EH C2=85.16% EH C3=8.52% EH C4=81.96% SCI 2=74.23% EDI 2=74.23% SS 1=87.36% AH 1=68.05%

**Total Fractional Values:** EH C2=1.17 EH C3=11.74 EH C4=1.22 SCI 2=1.35 EDI 2=1.35 SS 1=1.14 AH 1=1.47

**Key to revisions:**

## SAFETY DATA SHEET

In accordance with REACH Regulation EC No.1907/2006!

**Product:** Patchouli Oil

**Version:** 2

14.2. UN proper shipping name

Classification under Regulation (EC) No 1272/2008

Classification under Regulation (EC) No 1272/2008

Concentration % Limits

Product identifier

SECTION 3: Composition/information on ingredients

Total Fractional Values

**Key to abbreviations:**

Abbreviation	Meaning
Aquatic Chronic 2	Hazardous to the Aquatic Environment - Long-term Hazard Category 2
Aquatic Chronic 4	Hazardous to the Aquatic Environment - Long-term Hazard Category 4
Asp. Tox 1	Aspiration Hazard Category 1
Eye Irrit. 2	Eye Damage / Irritation Category 2
H304	May be fatal if swallowed and enters airways.
H315	Causes skin irritation.
H317	May cause an allergic skin reaction.
H319	Causes serious eye irritation.
H411	Toxic to aquatic life with long lasting effects.
H413	May cause long lasting harmful effects to aquatic life.
P261	Avoid breathing vapour or dust.
P264	Wash hands and other contacted skin thoroughly after handling.
P272	Contaminated work clothing should not be allowed out of the workplace.
P273	Avoid release to the environment.
P280	Wear protective gloves/eye protection/face protection.
P301/310	IF SWALLOWED: Immediately call a POISON CENTER or doctor/physician.
P302/352	IF ON SKIN: Wash with plenty of soap and water.
P305/351/338	IF IN EYES: Rinse cautiously with water for several minutes. Remove contact lenses, if present and easy to do. Continue rinsing.
P331	Do not induce vomiting.
P332/313	If skin irritation occurs: Get medical advice/attention.
P333/313	If skin irritation or rash occurs: Get medical advice/attention.
P337/313	If eye irritation persists: Get medical advice/attention.
P362	Take off contaminated clothing and wash before reuse.
P363	Wash contaminated clothing before reuse.
P391	Collect spillage.
P405	Store locked up.
P501	Dispose of contents/container to approved disposal site, in accordance with local regulations.
Skin Irrit. 2	Skin Corrosion / Irritation Category 2
Skin Sens. 1B	Sensitization - Skin Category 1B

The information in this safety data sheet is to the best of our knowledge true and accurate but all data, instructions, recommendations and/or suggestions are made without guarantee.

19-20 Sandleheath Industrial Estate, Fordingbridge, Hampshire, SP6 1PA, UK

Tel: 01425 655555 Email: technical@madarcorporation.co.uk

Page 15 of 16

# MYSTIC MOMENTS

## TECHNICAL DATA SHEET

---

**Item Name** : **Patchouli Oil**

---

<b>CAS #</b>	8014-09-3
<b>FEMA #</b>	NA
<b>EINECS #</b>	616-944-7
<b>Botanical Name</b>	Pogostemon cablin
<b>Product Description</b>	Yellow to brown mobile liquid having aromatic spicy, woody-balsamic odor
<b>Origin</b>	Indonesia

---

### **PHYSICO-CHEMICAL PROPERTIES:**

<b>Appearance</b>	Amber to brown
<b>Physical Status</b>	Mobile Liquid
<b>Flash Point (Closed cup) °C</b>	110°C
<b>Refractive Index</b>	1.483 - 1.523 @20°C
<b>Relative Density</b>	0.926 - 0.966 @20°C
<b>Optical Rotation</b>	-50 to -30
<b>Solubility in Alcohol</b>	NA
<b>Solubility in Water</b>	NA
<b>Main Components by GLC</b>	NA

---

<b>Shelf-Life</b>	24 months under recommended storage conditions.
-------------------	---

---

<b>Legislation</b>	Natural
--------------------	---------

---

<b>Stability</b>	Good stability under normal storage conditions.
------------------	---

---

<b>Uses</b>	Flavor & Fragrance Application
-------------	--------------------------------

---

<b>HANDLING PRECAUTION</b>	Keep away from heat, sparks, open flames, and hot surfaces. - No smoking. Do not eat, drink or smoke when using this product.
----------------------------	---

---

<b>PACKING &amp; STORAGE</b>	Store in a well-ventilated place. Keep container tightly closed. Keep cool. Ground/bond container and receiving equipment. Use explosion-proof electrical, ventilating and lighting equipment. Use only non-sparking tools. Take precautionary measures against static discharge.
------------------------------	--

---

NOTE: THIS IS A SYSTEM GENERATED DOCUMENT HENCE NEED NOT BE AUTHENTICATED.